



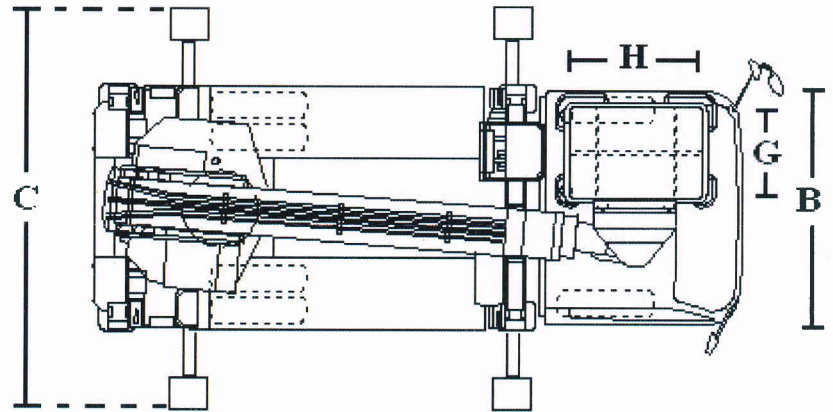
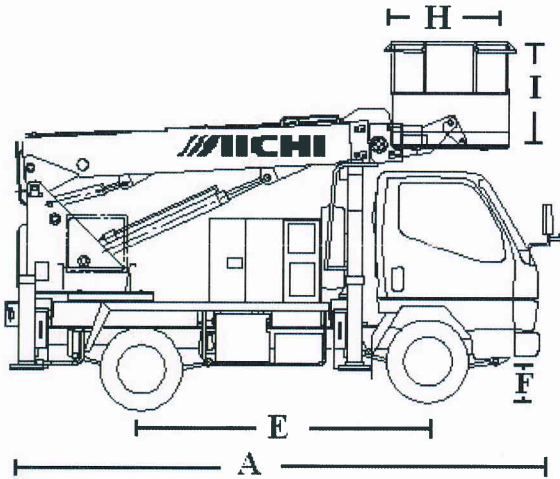
Daniel Smith Industries Ltd

315 Flaxton Road, Rangiora, 7400
 Canterbury, New Zealand.
 Phone: 0064 (0) 3 313 9902
 Fax: 0064 (0) 3 313 9904
 Mobile 0064 (0) 21 33 66 23
 Email: daniel@danielsmith.co.nz
 Website: www.danielsmithindustries.co.nz



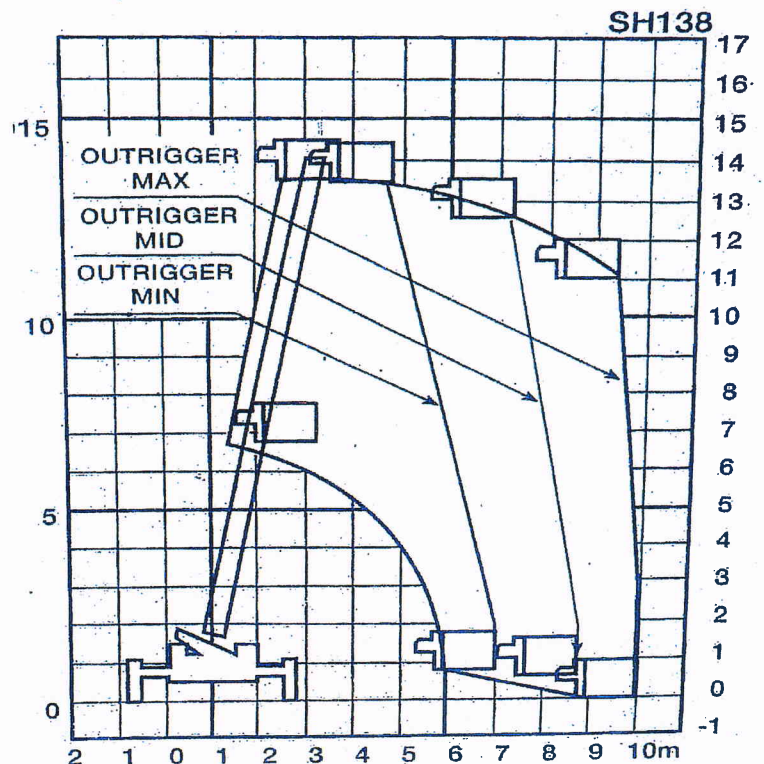
SH138

Truck Mounted Access Boom



WORKING DIAGRAM

<u>Reach Specification</u>	
Max Working Height:	14,000 mm
Horizontal Reach:	10,000 mm
Platform Capacity: (SWL)	200 kg
<u>DIMENSIONS</u>	
A. Overall Length:	6,260 mm
B. Overall Width:	2,165 mm
C. Outriggers Width:	3,660 mm
D. Overall Height Stowed:	3,480 mm
E. Wheel Base	3,210 mm
F. Ground Clearance:	260 mm
<u>PLATFORM</u>	
G. Platform Length:	1,060 mm
H. Platform Width:	680 mm
I. Platform Depth:	1,010 mm



- ◆ Always set up on firm level ground and check for underground services / ducts.
- ◆ Always set outrigger to full extension
- ◆ Maximum load in man bucket is 200kg
- ◆ Man bucket to be operated in accordance with NZ Code of Practice – Elevated Work Platforms